

Level 2: Book 15 Practice Sheet

A. Look and read.



B. Listen, circle and say.

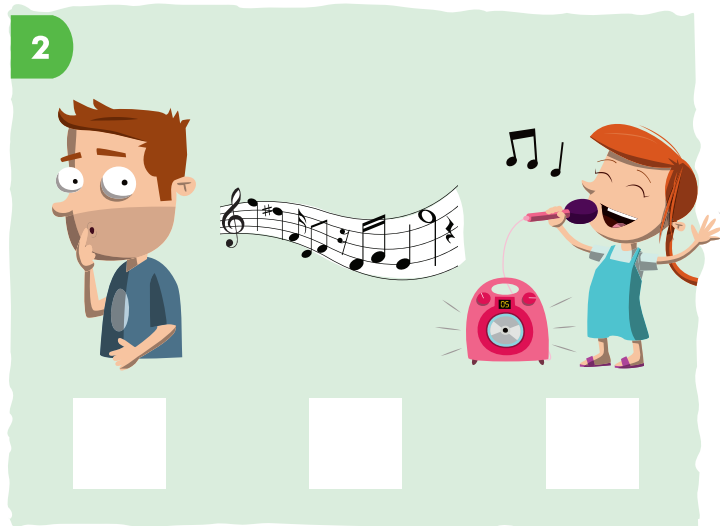
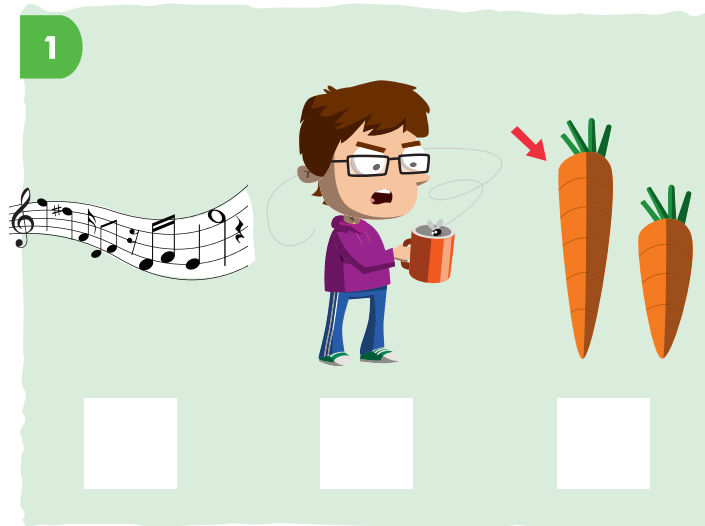
1 s a sh
l e i ng
t o u tch

2 w a ng
wh i nt
ch o th

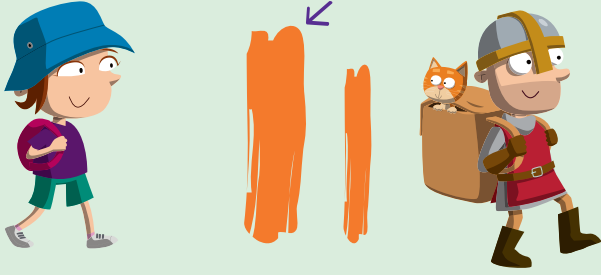
3 n a ng
l e i nd
d o u st

4 go a sh
k e i lp
h o u ng

C. Listen and identify the word that does not have the same final blend.

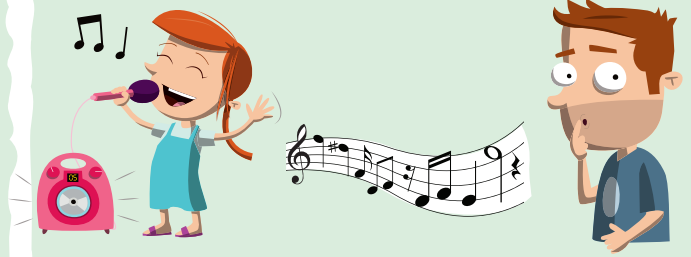


3



□ □ □

4



□ □ □

D. Listen and circle.

- 1 **sin** **sing** **zing**
- 2 **hush** **huch** **hosh**
- 3 **napin** **nabbing** **napping**
- 4 **wong** **long** **song**

E. Listen and write.

1 **lo** _____

2 **hu** _____

3 **goi** _____

4 **wa** _____

