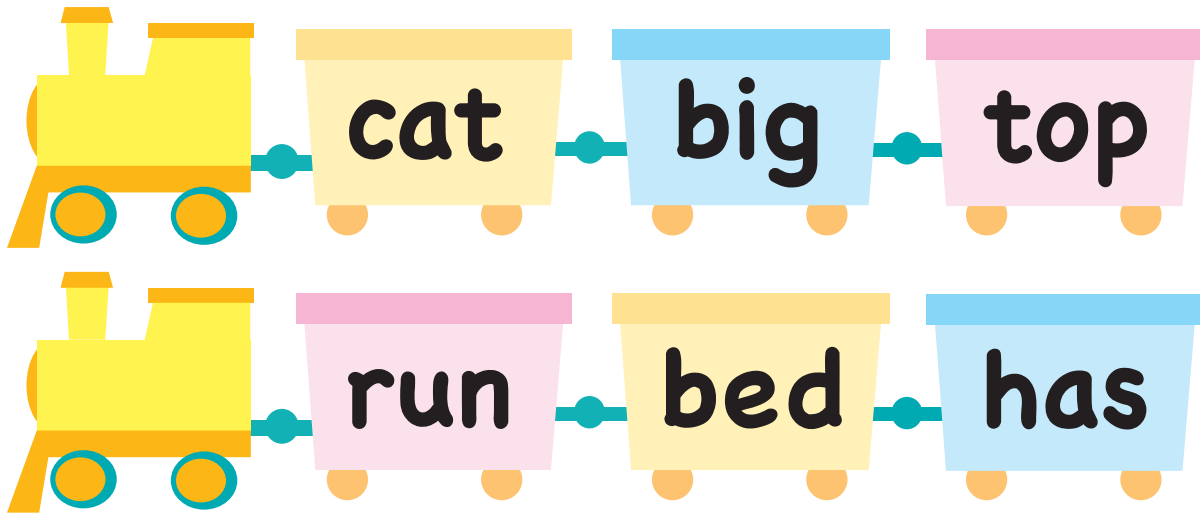


# Level 1: Book 16 Practice Sheet

A. Look and read.



B. Listen, circle and say.

1      **him**                  **but**                  **hot**

---

2      **can**                  **sun**                  **got**

---

3      **ran**                  **did**                  **sit**

---

4      **leg**                  **get**                  **yes**

C. Which word does not belong in the group? Check the box.

1


2

Below each group of illustrations are three empty boxes for marking the odd one out.

C. Listen and circle.

1 What is the first sound in  ?

**c t g**

2 What is the ending sound in  ?

**p n m**

3 What is the vowel in  ?

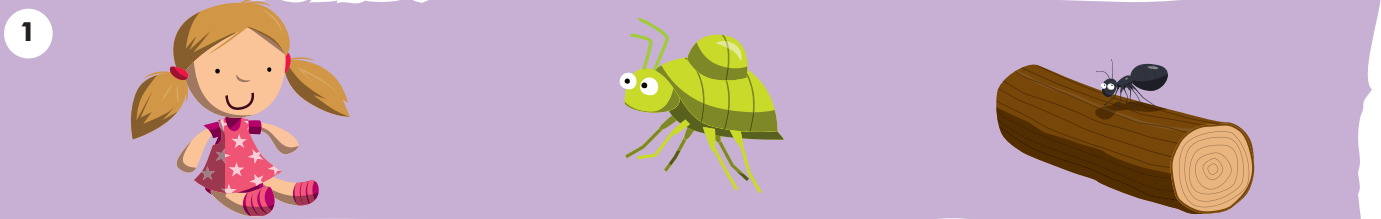
**e i k**

4 What is the vowel sound in  ?

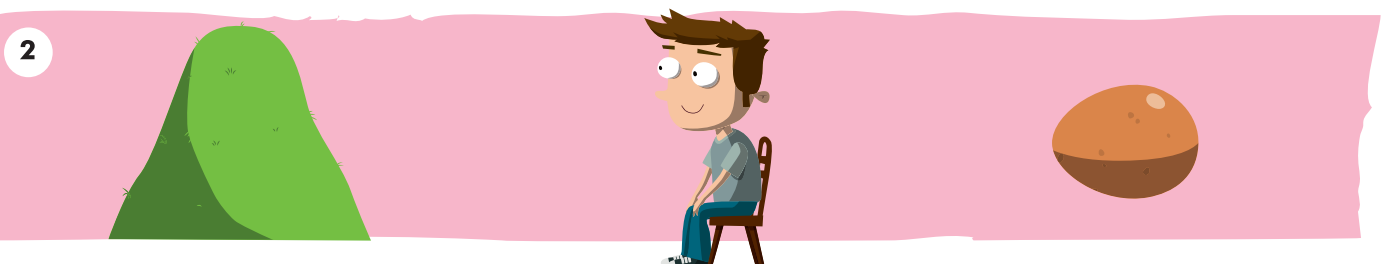
**o b a**

D. Listen and circle the correct picture.

Circle the picture that starts with the /d/ sound.



Circle the picture that starts with the /s/ sound.



E. Listen and check for comprehension.

